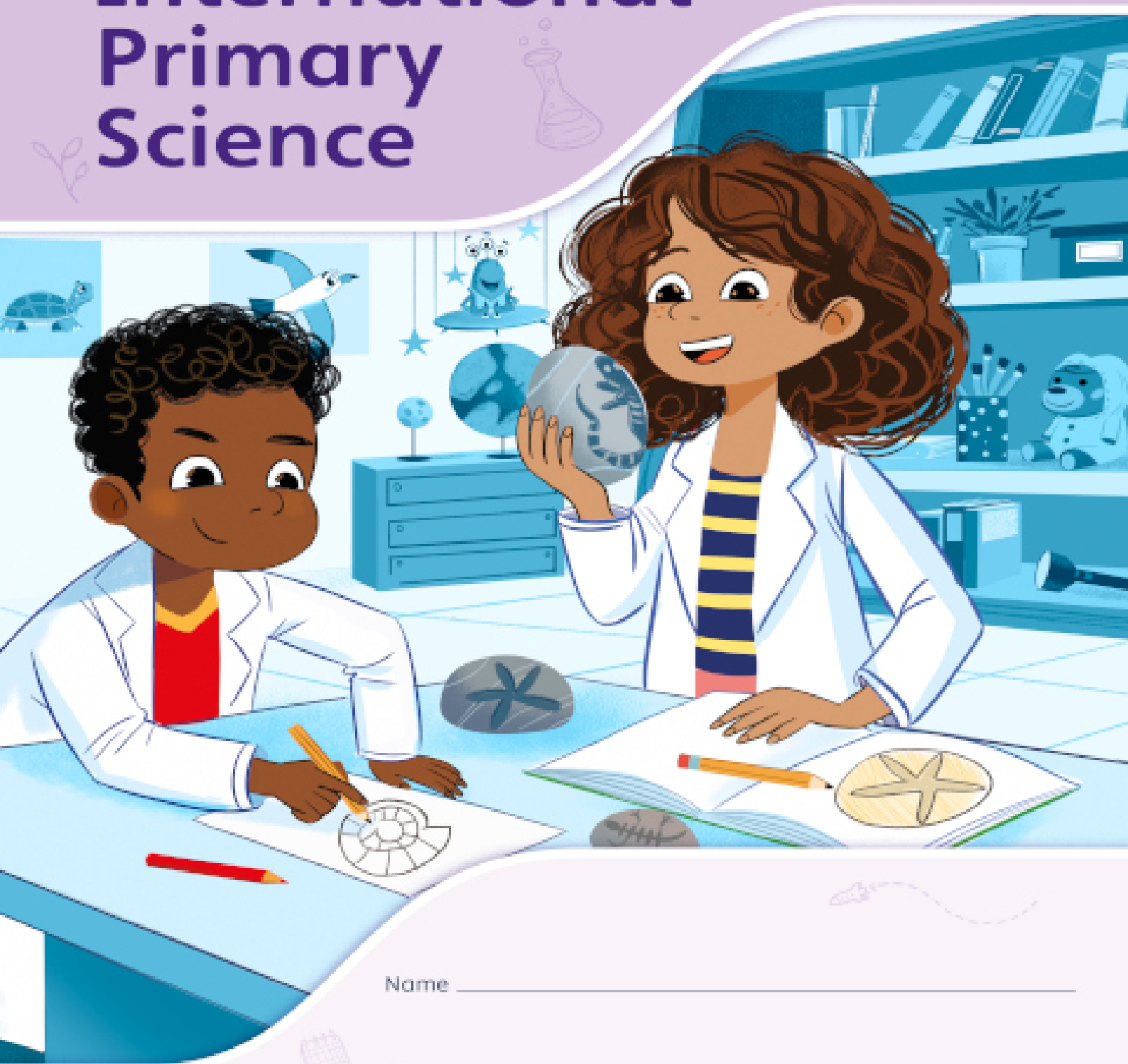


Year 5
Workbook

Pearson International Primary Science



Name _____

Class _____



Year 5

Workbook



Pearson

Published by Pearson Education Limited, 80 Strand, London, WC2R 0RL.
www.pearson.com/international-schools

Copies of official specifications for all Pearson Edexcel qualifications may be found on the website:
<https://qualifications.pearson.com>

Text © Pearson Education Limited 2023
Produced by Just Content Ltd
Designed by PDQ Media Digital Media Solutions
Typeset by PDQ Media Digital Media Solutions
Picture research by Straive Ltd
Original illustrations © Pearson Education Limited 2023
Cover design © Pearson Education Limited 2023

The right of Lesley Butcher to be identified as the author of this work has been asserted by her in accordance with the Copyright, Designs and Patents Act 1988.

First published 2023

26 25 24 23
10 9 8 7 6 5 4 3 2 1

British Library Cataloguing in Publication Data

A catalogue record for this book is available from the British Library

ISBN 978 1 292 43339 4

Copyright notice

All rights reserved. No part of this publication may be reproduced in any form or by any means (including photocopying or storing it in any medium by electronic means and whether or not transiently or incidentally to some other use of this publication) without the written permission of the copyright owner, except in accordance with the provisions of the Copyright, Designs and Patents Act 1988 or under the terms of a licence issued by the Copyright Licensing Agency, 5th Floor, Shackleton House, 4 Battlebridge Lane, London, SE1 2HX (www.cla.co.uk). Applications for the copyright owner's written permission should be addressed to the publisher.

Printed in the UK by Bell & Bain

Contents

1	Plant adaptations	2
2	Living things in danger	24
3	Diet and digestion.....	50
4	Mixing and separating materials	80
5	Earth and space	104
6	Seeing and reflecting	130



Plant adaptations

Plants are living things. They need light to make their food and the right temperature to grow well. Plants also need air and water. Adaptations help plants to survive in their habitat.

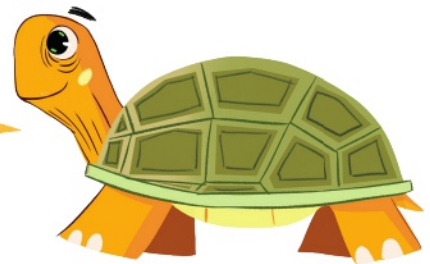


In this topic we will learn:

- that different habitats and microhabitats have different environmental conditions
- that plant roots take in water and that the availability of water may affect root growth
- that both plants and animals need oxygen from the air for respiration
- that plants need light and that the availability of light affects where they can grow
- to describe how plants are adapted to the environment they live in
- to compare plant adaptations in two contrasting habitats
- to predict the habitat of a plant by looking at its adaptations.

Some plants are adapted to grow in hot, dry habitats.

I wonder why some plants that grow in deserts have spines instead of leaves? I wonder how a plant that grows in a rainforest would differ?



Here are some key words to help you

habitat

rainforest

temperate

freshwater

aquatic

desert

grassland

microhabitats

oxygen

light intensity

respiration

producers



Choose two key words from the box above.
Write or draw what they mean.

Habitats around the world

- I a) Read about each type of habitat in your textbook and then describe it in your own words as much as you can.
- b) Find out **one** new fact about each habitat, such as the name of an animal or plant that lives there or a country where the habitat is found.

Rainforest

Temperate forest

Oceans and seas

Freshwater ponds and lakes

Desert

Grassland or savanna

2 Find out about **one** more habitat. Name it and describe it.

Microhabitats

1 a) What does the word **habitat** mean?

b) What do scientists call the smaller places that differ in some way to the bigger habitat?

2 Name **two** things this plant can get in the crack that it cannot get on the path.

1. _____

2. _____



3 Why does this rainforest plant grow better on a tree branch than on the ground?



4 Circle **two** words that best describe the habitat of the small plants growing on the ground.

hot cool aquatic

shady windy desert



- 5 Look at a habitat outdoors where you live. Find a sunny part and a shady part.

Measure the light intensity, the temperature and how wet the soil is in both parts. Observe anything you cannot measure.

- a) What is causing the shade?

- b) Name the equipment used to measure:

(i) light intensity _____

(ii) temperature _____

- c) (i) Write your measurements and observations in the table.
 (ii) Write the type of habitat at the top.

Type of habitat:		
	Sunny part	Shady part
Description of place		
Light intensity		
Temperature		
How wet is it?		
Other observations		

Plants need water

- 1 a) What type of plant is shown in the picture?

- b) Circle **two** words that describe this plant's habitat.

cold

hot

dry

wet



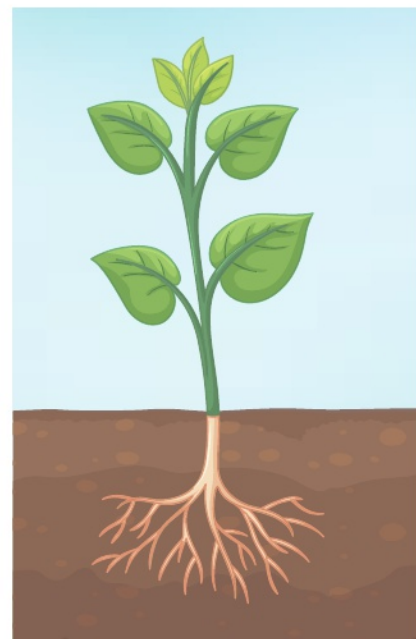
- c) Why does this plant have spines instead of leaves?

- 2 a) Name the part of this plant that stores water.

- b) Name the part of this plant that takes in water from the soil.



- 3 Draw **two** arrows on this picture to show two different places where water leaves the plant and enters the air.



4 This tree is called a mesquite tree.

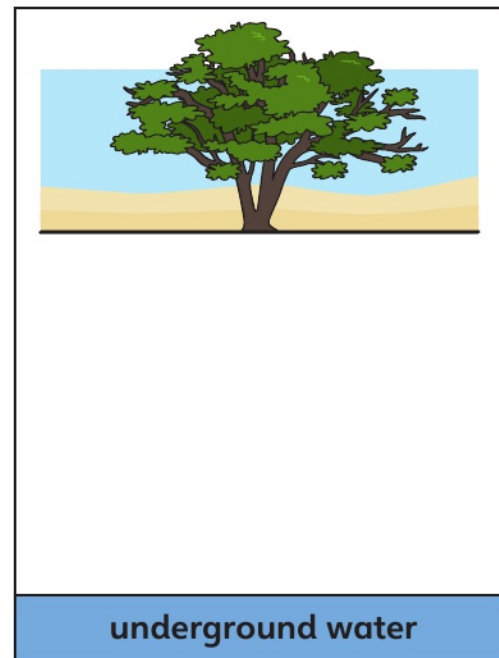
a) Name the type of habitat that it is growing in.



b) Mesquite trees take in water from very deep underground.

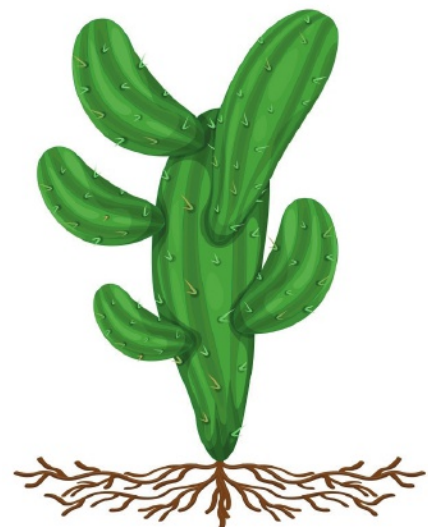
Predict what the underground part of this tree looks like.

Draw your prediction.



5 This plant has very wide roots.

Explain how the roots help the plant to survive in sandy soil.



Plants need oxygen

- 1 a) Circle **one** place where air enters our body when we breathe.



- b) (i) Which gas in the air do we use to stay alive?

- (ii) For which life process do we use this gas?

- (iii) Name **one** place that our blood takes this gas.

- 2 Explain why leaves have very tiny holes like this.

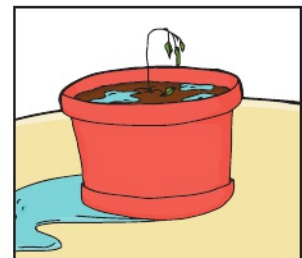


- 3 Look at this plant. It was watered too much.

- a) What has happened to the plant?

- b) Which part of the plant is inside the pot?

- c) How does too much water affect the air in the soil?



4 a) What type of plants are these?



b) Label these **four** parts of the plant by drawing a line and writing the word each time.

leaves branch trunk root



c) Explain why this plant has some roots that are not in the soil.

Plants need light

- 1 a) In which place do plants get **most** light? Circle **one** letter.



- b) Name the equipment used to measure light intensity.

- c) How are these plants getting more light than plants outside?



- d) How are these plants getting more light?



- 2 Green plants make their own food.

Circle **one** name for them.

consumers producers herbivores predators