

LISTENING DRIVE

4

*A Vocabulary
and Skill Builder*

Kayang Gagiano



Listening Drive 4 A vocabulary and skill builder

Kayang Gagiano

© 2013 Compass Publishing

All rights reserved. No part of this book may be reproduced, stored in a retrieval system, or transmitted in any form by any means, electronic, mechanical, photocopying, recording, or otherwise, without prior permission in writing from the publisher.

Acquisitions Editor: Casey Malarcher

Project Coordinator: Melissa Yoon

Content Editor: Thomas Randolph

Copy Editor: Eung-choen Hah

Designer: Jisook Lee

<http://www.compasspub.com>

email: info@compasspub.com

ISBN 978-1-61352-441-1

15 14 13 12 11 10 9 8 7 6 5 4 3
19 18 17 16

Photo Credits

All images © Shutterstock, Inc.

Printed in Korea

o Preface

Listening Drive 4 is part of the fourth level in a four-level preparatory course for elementary and middle school students. This four-skill series is designed to assist students in developing their English language aptitude through exposure to the essential English grammatical structures and vocabulary encountered most commonly in communication and academic study.

When used together, the four skill books at each level of the Drive series support students in developing their fundamental English language skills in reading, listening, speaking, and writing. In each skill book, twelve themed units introduce topic-based vocabulary, while focusing on separate grammatical and idiomatic structures. Contextually acquired vocabulary and full-color pictures are used to aid learners in their interpretation of new language.

Each unit progresses with a vocabulary introduction, grammar or expression practice, idiom practice, and skill review and testing sections. Each unit builds on the previous, providing ample opportunities for review of newly acquired language. Wrap-Up Quizzes at the end of each skill book aim to consolidate the material that students have learned throughout the book with grade-appropriate vocabulary and structures. Each level of this four-skill series teaches 500 words from the 3,000 most common headwords encountered in communication and academic study.

Each book of this four-skill series focuses on a separate skill, allowing students to concentrate on the necessary techniques and strategies for the separate skills of listening, reading, speaking, and writing without having to encounter multiple skills. **Listening Drive 4** provides an excellent foundation for students seeking to develop their English language listening skills for both real world communication and academic study. Students completing all four levels of the Drive series will study over 2,000 different headwords.

How to Use This Book

The following lesson plan is designed for a one-hour class period. For teachers with less available class time per unit, certain parts of the sample lesson plan may be omitted or shortened as necessary.

Target Language and Warm-Up 15 min.

The first two pages of each unit present five of the target vocabulary items for the unit. This presentation is followed by a number of activities that guide students through practicing both listening skills and the vocabulary items in activities with progressively less textual or visual support.

In addition to simply working through the activities as presented in the student book, teachers may want to provide classes with additional practice including, but not limited to, the following suggestions:

Part (A): Have students create additional example sentences using the target words.

Part (B): Have students check their answers in pairs by role playing the question-answer dialogs before listening for the answers.

Part (C): Have students create one more sentence in pairs or in small groups that describes the picture or continues the "story" of this activity.

Part (D): Have students brainstorm possible sentences that describe each picture before listening to the audio track.

Part (E): Have students read all of the questions in this activity before listening and circle key words in the questions that tell them the kind of information they need to listen for.

Unit 1 Art and Culture

A Learn the words.

instrument The violin, cello, and guitar are all string **instruments**.
appointment I had to move my **appointment** with the doctor because I had to work.
gallery Artworks are often exhibited in a place called a **gallery**.
schedule People who have lots of plans should keep a **schedule** to keep track of them.
funeral Ceremonies like weddings often require **formal** clothing.

B Match the questions with the best response. Listen and check your answers.

- Do you know where the new art exhibit will be?
- Are you free this Saturday to go see a play?
- What should I wear to the wedding?
- Do you play any instruments?

C Use the vocabulary from the unit to describe the pictures.

D Listen and choose the best response.

- (a) (b) (c)
- (a) (b) (c)
- (a) (b) (c)
- (a) (b) (c)

E Listen to the conversations or talks. Choose the right answers.

- What are the speakers mainly talking about?
(a) (b) (c)
- Why is it important that they take the subway?
(a) (b) (c)
- What is true about the speaker?
(a) (b) (c)
- What is the purpose of the talk?
(a) (b) (c)

Practice Drive 15 min.

Pages three and four of each unit present five additional target vocabulary items for the unit. As with the Warm-up pages, the Practice Drive guides students through activities practicing listening skills and vocabulary items in activities with progressively less textual or visual support.

The same optional suggestions for extension activities in the Warm-up pages apply to the Practice Drive activities (A) through (E).

Practice Drive

A Learn the words.

item An **item** can be anything, even pieces of information or details.
appreciate The crowd cheered to show how much they **appreciated** the singer.
quality The **quality** of the artist's paintings seemed to get better as he got older.
category Similar things or groups of things can be organized into **categories**.
emotion The movie played on the **emotions** of the audience, making them laugh and cry.

B Match the questions with the best response. Listen and check your answers.

- What are those items on the table?
- What do you think of the quality of the music?
- Why is that television so popular?
- Do you like going to the museum?

C Listen and choose the best response.

- (a) (b) (c)
- (a) (b) (c)
- (a) (b) (c)
- (a) (b) (c)

D Study the schedule. Then answer the questions.

Exhibit	Description	Times
Ancient Egypt	Artworks by Michelangelo, 25 paintings and 4 art pieces done in traditional Egyptian style.	(a) Monday 1 p.m. - 5 p.m. (b) Wednesday 1 p.m. - 5 p.m.
Classical Sculpture	Artworks by Henry Ford, 10 statues and 10 stone carvings made in classical Greek style.	Tuesday 11 a.m. - 4 p.m. (d) Thursday 9 a.m. - 3 p.m.
Modern Masterpieces	Artworks by Stella Kim, 15 paintings and 4 sculptures done in modern style.	(c) Friday 9 a.m. - 5 p.m. (e) Saturday 10 a.m. - 4 p.m.

- Which of the following statements is NOT true according to the schedule?
(a) (b) (c) (d) (e)
- Now listen to a talk about the schedule. Choose the incorrect information in the schedule.
(a) (b) (c) (d)

E Listen to the conversations or talks. Choose the right answers.

- What is the man looking for?
(a) (b) (c)
- What is the purpose of the conversation?
(a) (b) (c)
- What is true about the story according to the talk?
(a) (b) (c)
- What is NOT true about the music?
(a) (b) (c)

Challenge Drive 5 min.

Page five of each unit presents longer listening passages for students to practice with. After listening to the longer dialog or talk for each question, students should use what they have heard to answer multiple questions related to the information. Also included in the Challenge Drive is a chart or map related listening activity in which students synthesize visual information with statements describing the related chart or map.

For teachers who desire to provide extension activities related to the listening tasks on this page, the following possibilities are suggested:

Parts (A) and (B): After completing the task shown in the student book, have students listen to the audio track again as they read along in the transcript. Allow students to ask about any information, vocabulary items, or grammar structures they have trouble with. Students can also practice reading the dialog or talk aloud in pairs.

Part (C): Have the class create their own charts based on information from classmates related to the information shown in the book or practice giving directions to different places using the map from the unit.

Challenge Drive

A Listen to the conversation. Answer the questions.

- Where are the speakers going?
(a) (b) (c)
- What is true about the show?
(a) (b) (c)

B Listen to the talk. Answer the questions.

- What is the purpose of the talk?
(a) (b) (c)
- What is NOT true about the club?
(a) (b) (c)

C Study at the schedule. Then answer the questions.

The Trial of Captain Hook		
	Cast	Showing
Group A	Brian Ellis as Captain Hook	Monday 7 p.m. – 9 p.m.
	(a) Matthew Smith as Peter Pan Sara Archer as Wendy	Wednesday 7 p.m. – 9 p.m.
Group B	Herman Miles as Captain Hook	Tuesday 9 a.m. – 11 a.m.
	Matthew Smith as Peter Pan Lucy Jenkins as Wendy	(b) Thursday 8 a.m. – 10 a.m.
Group C	(c) Brian Ellis as Captain Hook	Friday 7 p.m. – 9 p.m.
	Chris Peters as Peter Pan Sara Archer as Wendy	(d) Saturday 6 p.m. – 8 p.m.

- Which of the following statements is NOT true according to the schedule?
(a) (b) (c) (d)
- Now listen to a talk about the schedule. Choose the incorrect information in the schedule.
(a) (b) (c) (d)

Quiz Drive 5 min.

Page six of each unit provides consolidation activities in the form of a listening quiz. Each quiz begins with a Question and Response section. This is followed by a series of dialogs and talks with a single comprehension question after each. All quizzes end with a chart or map task similar to the task found in the Challenge Drive sections of each unit.

Study of the transcripts related to all quiz tasks provides natural extension activities for the Quiz Drive pages of each unit.

Workbooks, Reviews, and Wrap-Up Quiz

The workbook supplement that accompanies each student book includes four activities for each unit. The workbook units recycle the target vocabulary items of the student book units in easy-to-follow activities that students can complete at home. Along with the twelve thematic units in each student book, the Drive series provides four Reviews to reinforce vocabulary acquisition and grammar recognition through additional reading practice. Each student book also concludes with a Wrap-Up Quiz that can be used to help students recognize how much improvement they have achieved in the target skill of listening.

Quiz Drive

A Listen and choose the best response.

- (a) (b) (c)
- (a) (b) (c)
- (a) (b) (c)

B Listen to the conversations or talks. Choose the right answers.

- (a) (b) (c) (d)
- (a) (b) (c) (d)
- (a) (b) (c) (d)

C Study the schedule. Then answer the questions.

Movie Showings		
Title	Times	Seats Remaining
(a) The Kitten Whisperer	4:00 p.m. 10:00 p.m.	2 seats 5 seats
(b) Galaxy Force	6:30 p.m. 8:30 p.m.	3 seats No seats
(c) Ten Trouble Masters	8:00 p.m. 10:00 p.m.	1 seat 2 seats
(d) Tony Love	9:00 p.m.	4 seats

- Which of the following statements is true according to the schedule?
(a) (b) (c) (d)
- Now listen to a conversation about the schedule. Choose the incorrect information in the schedule.
(a) (b) (c) (d)



Contents

Unit 1 Art and Culture 8

Unit 2 Lessons from the Past 14

Unit 3 Health and Fitness 20

 **Units 1–3** Review 26

Unit 4 Sports and Hobbies 28

Unit 5 Social Sciences 34

Unit 6 Let's Go Traveling! 40

 **Units 4–6** Review 46

Unit 7 Famous People 48

Unit 8 Let's Do Business! 54

Unit 9 Science and Medicine 60

 **Units 7–9** Review 66

Unit 10 The World of Nature 68

Unit 11 Exploring Earth and Space 74

Unit 12 Using Modern Technology 80

 **Units 10–12** Review 86

 Wrap-Up Quiz 88

Word List 97

A Learn the words.

○	instrument	The violin, cello, and guitar are all string instruments .
○	appointment	I had to move my appointment with the doctor because I had to work.
○	gallery	Artworks are often exhibited in a place called a gallery .
○	schedule	People who have lots of plans should keep a schedule to keep track of them.
○	formal	Ceremonies like weddings often require formal clothing.

B Match the questions with the best response. Listen and check your answers.

Track
01

- | | | |
|---|---|--|
| 1. Do you know where Rebecca's new art exhibit will be? | • | • (a) I used to play the piano but not anymore. |
| 2. Are you free this Saturday? I want to go see a play. | • | • (b) I think you should wear something formal. |
| 3. What should I wear to Matt's wedding? | • | • (c) I heard it will be at the gallery next to the movie theater. |
| 4. Do you play any instruments? | • | • (d) I'm sorry. I have an appointment. |

C Use the vocabulary from A to fill in the blanks. Listen and check your answers.

Track
02



- The musicians are holding string _____.
- They are wearing _____ clothing.
- They are playing in a(n) _____.

D Listen and choose the best response.

Track 03

1.



(a) (b) (c)

2.



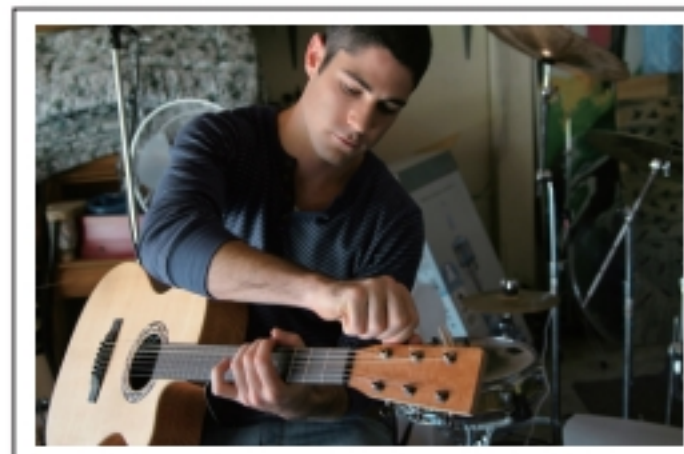
(a) (b) (c)

3.



(a) (b) (c)

4.



(a) (b) (c)

E Listen to the conversations or talks. Choose the right answers.

Track 04

1. What are the speakers mainly talking about?

(a) (b) (c)

2. Why is it important that they take the subway?

(a) (b) (c)

3. What is true about the speaker?

(a) (b) (c)

4. What is the purpose of the talk?

(a) (b) (c)

Practice Drive

A Learn the words.

○	item	An item can be anything, even pieces of information or details.
○	appreciate	The crowd cheered to show how much they appreciated the singer.
○	quality	The quality of the artist's paintings seemed to get better as he got older.
○	category	Similar things or groups of things can be organized into categories .
○	emotion	The movie played on the emotions of the audience, making them laugh and cry.

B Match the questions with the best response. Listen and check your answers.

Track 05

- | | |
|---|--|
| 1. What are those items on the table? • | • (a) It's a high quality television, so the parts must be more expensive. |
| 2. What do you think of the painting? • | • (b) I think it shows a lot of emotion. |
| 3. Why is that television so expensive? • | • (c) I don't really appreciate theater like others do. |
| 4. Do you like going to see plays? • | • (d) They are just some notebooks and pencils. |

C Listen and choose the statement that best describes the picture.

Track 06



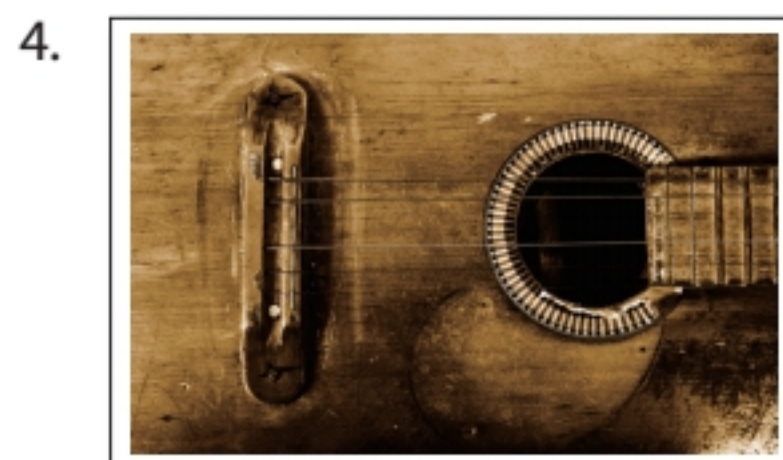
(a) (b) (c)



(a) (b) (c)



(a) (b) (c)



(a) (b) (c)