

AMERICAN ENGLISH

SUPER MINDS

Contents

	Good Job, Ben and Lucy!	4
1	In the Museum	10
2	The World Around Us	22
3	Danger!	34
4	Two Round-Trip Tickets	46
5	Police!	58
6	Mythical Beasts	70
7	Orchestra Practice	82
8	In the Planetarium	94
9	At the Campsite	106
	My Super Mind	118

Good Job, Ben and Lucy!

1 Look at the photos and letters. Write the words.



greathophopr

photographer



routjailns



pcomeiorhn



dabn



emubrp scar



l ferro astcore



riseFr lhewe



laosecur



ymrao

2 Read and write the words.

1 He writes stories for newspapers.

journalist

2 He's the most important person in town.

3 She takes photos.

4 Four amusement park rides.

3 What is your favorite amusement park ride?

1 Match the questions and answers.

- 1 Are you eleven?
- 2 What's your favorite color?
- 3 When do you get up in the mornings?
- 4 Where do you go on your vacations?
- 5 Who is your best friend?
- 6 Do you like going on adventures with Ben?
- 7 Does Ben ever make you angry?
- 8 Is it fun being an Explorer?

- a Yes, it is.
- b Ben, of course.
- c Yes, I do.
- d Blue, definitely.
- e Sometimes, when he's scared of silly things.
- f About 7 o'clock.
- g No, I'm ten.
- h I go to the beach.

2 Complete the questions.

- 1 How old are you?
- 2 _____ do you live?
- 3 _____ you have any brothers or sisters?
- 4 _____ your favorite color red?
- 5 _____ your school have a uniform?
- 6 _____ is your favorite class?
- 7 _____ do you get home from school?
- 8 _____ you tell your best friend everything?



3 Answer the questions in Activity 2 about you.

- 1 _____
- 2 _____
- 3 _____
- 4 _____
- 5 _____
- 6 _____
- 7 _____
- 8 _____

1 Remember the song. Write the words in order.

fun / Here / they / ~~The~~ / come / and /
Adventure / and / Lucy / ~~Explorers~~ / Ben
The Explorers.

stars / Ben / are / Here / The / and /
Action / they / Lucy / Explorers

2 Is it Ben or Lucy in the song? Write the sentences in the correct box.

I find the treasure. I like adventure.
I love exploring things. I'm not scared of anything.





3 Answer the questions and check your answers.

ARE YOU AN EXPLORER?

1 Do you like adventure? _____

2 Do you like exploring things? _____

3 Do you like exciting things? _____

4 Are you scared of anything? _____

KEY

Q 1–3: yes = 1 point, no = 0 points

Q 4: no = 1 point, yes = 0 points

4 points: You're a true Explorer,
just like Ben and Lucy.

3 points: You're almost an Explorer.

1–2 points: You aren't an Explorer
right now.

0 points: You aren't really
an Explorer.

1



What did Emma do at the party? Listen and check ☒.



2

Complete the questions.

- 1 What was the party like?
- 2 there a band?
- 3 you dance?
- 4 there a barbecue?
- 5 you have a lot of fun?
- 6 there bumper cars, too?

3

Write questions for the answers.

- 1 *What did you do last night?*
Last night? I watched TV.
 - 2 _____
I watched a movie.
 - 3 _____
Yes, it was a really good movie.
 - 4 _____
No, I didn't watch the game. I don't like soccer.

4

Answer the questions for you.

- 1 Where did you go yesterday morning?
-
- 2 What did you do on Saturday afternoon?

1 Read the story *The Map* again. Then put the sentences in order.

- ☐ Mr. Davidson tells them about a king.
- ☒ 1 The children tell Mr. Davidson about their adventure.
- ☐ Mr. Davidson shows the children a map.
- ☐ Mr. Davidson finds a symbol on the statue.
- ☐ Horax calls Zelda.
- ☐ The children see the symbol and read a rhyme on the map.

2 Read and write the words.

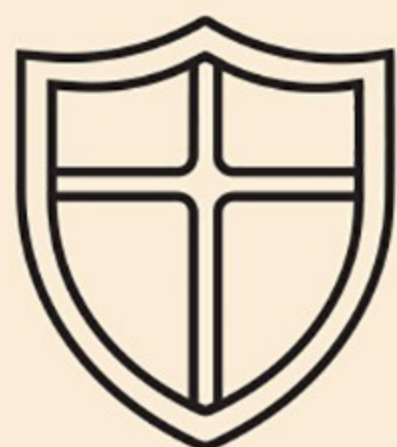
go rhyme quiz is ~~know~~ find

Study the map, so then you (1) know
The places where you have to (2) _____.
When you get there, look and (3) _____.
A line like this to make a (4) _____.
The lines together make a (5) _____.
To tell you where the treasure (6) _____.

3  The pictures on the map tell Ben and Lucy where to look.
Look, guess, and write sentences. Use words from the box.

school library lake station ~~museum~~ concert hall
castle statue art gallery restaurant planetarium zoo

1

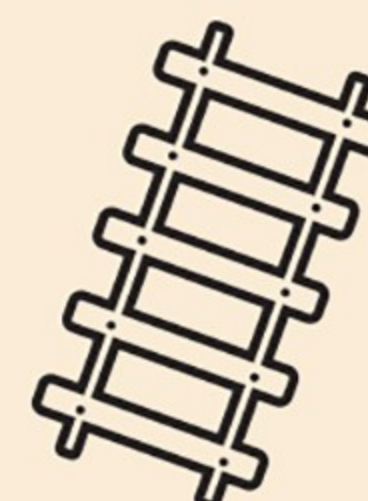


I think they have
to find a museum.

2



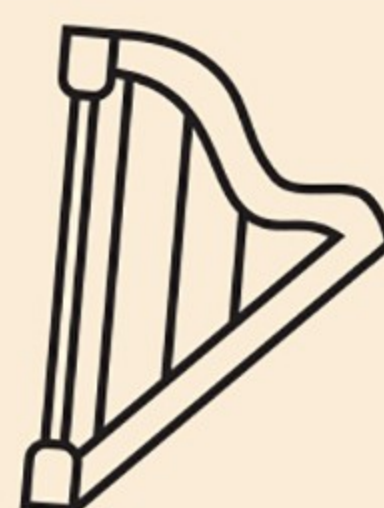
3



4



5



6



What do I know?

1 Color the bricks to make sentences. Write in the missing words.

1	<u>Does</u> your	you go on	in a band?
2	_____ your parents	TV	yesterday?
3	Where _____	brother play	the weekend?
4	_____ you watch	you do on	Spanish?
5	_____ did	speak	vacation last summer?

2 Match the rhyming words.

- 1 noise

2 rhyme

3 shoe

4 toe

5 cheese
- a trees

b snow

c boys

d time

e glue

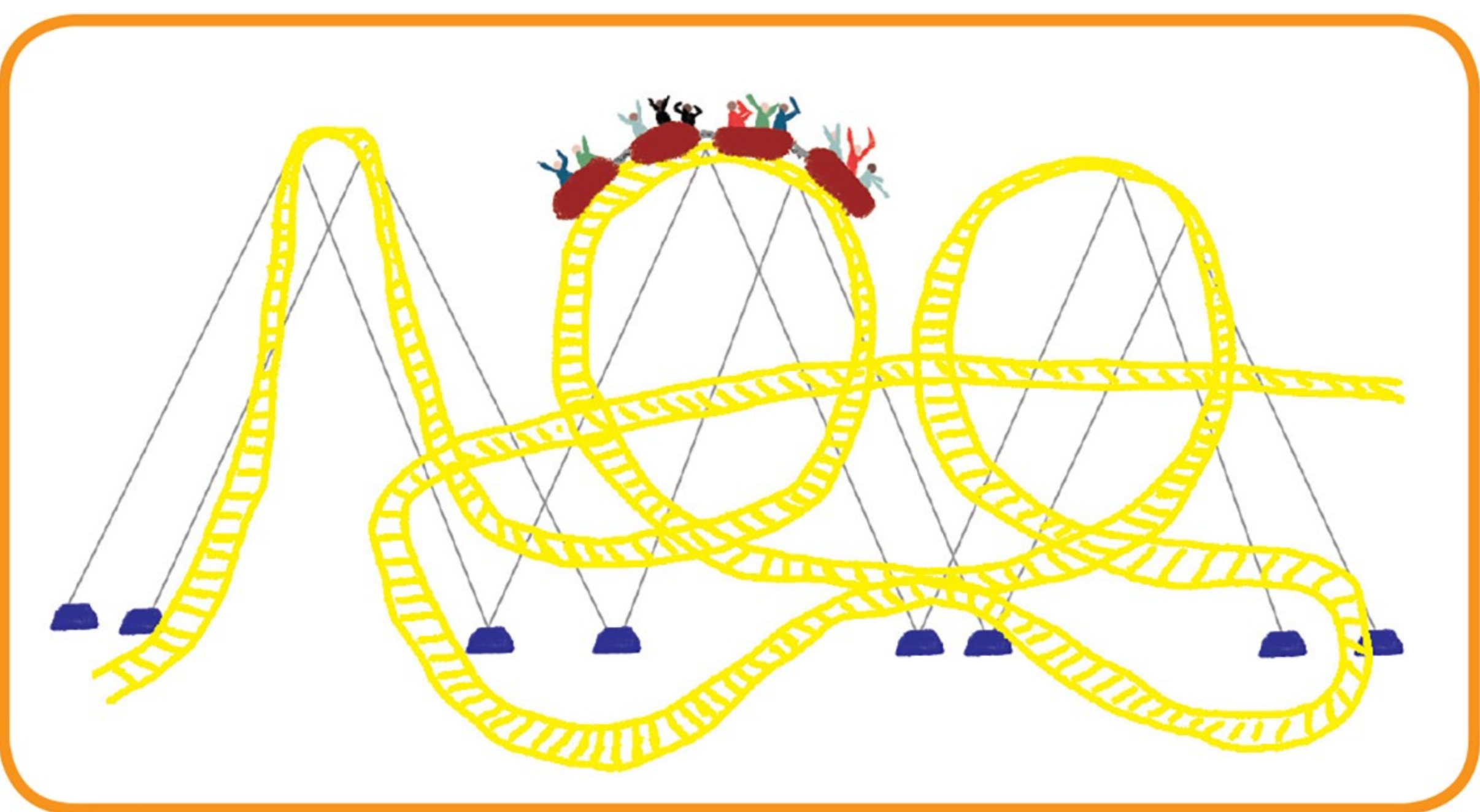


3 002 Listen, say, and check your answers.

About me!

4 Imagine you went to an amusement park. What did you see and do? Read. Then write about you and draw.

I saw a big roller coaster. I went on
a carousel. It was fun. Then I ...



1

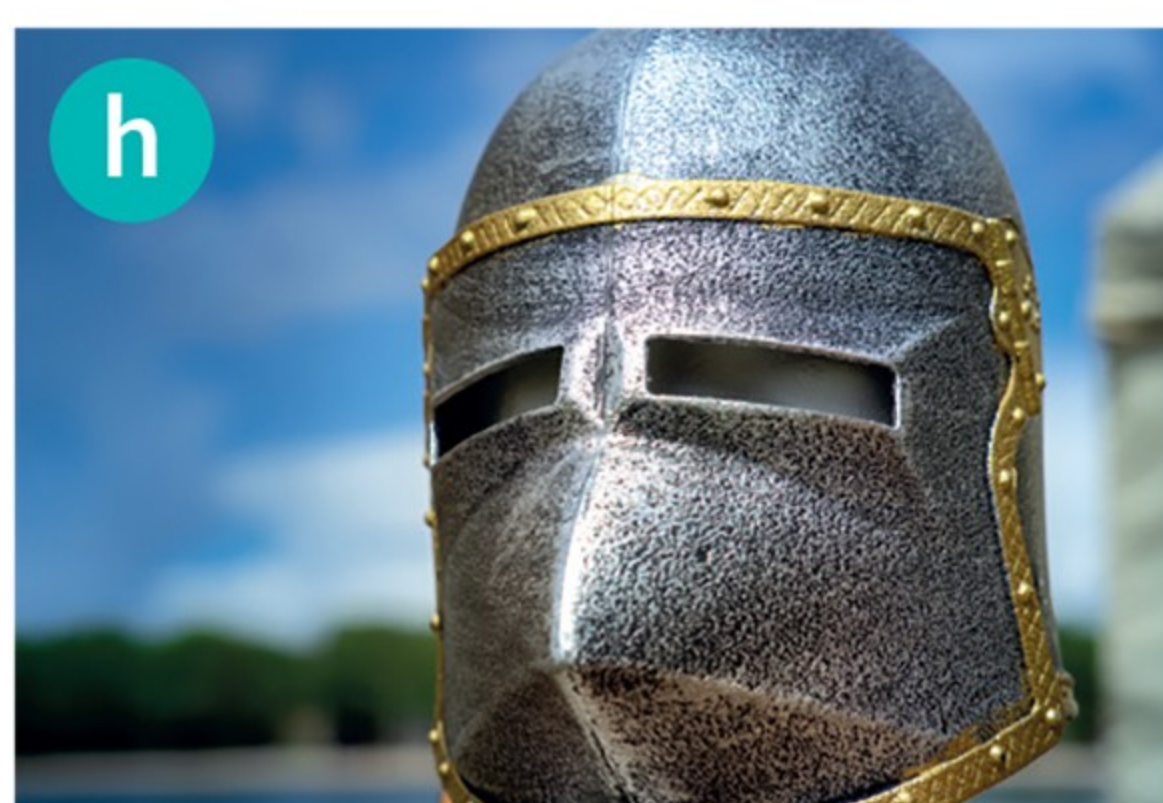
In the Museum

1 Complete the words. Then look and match.

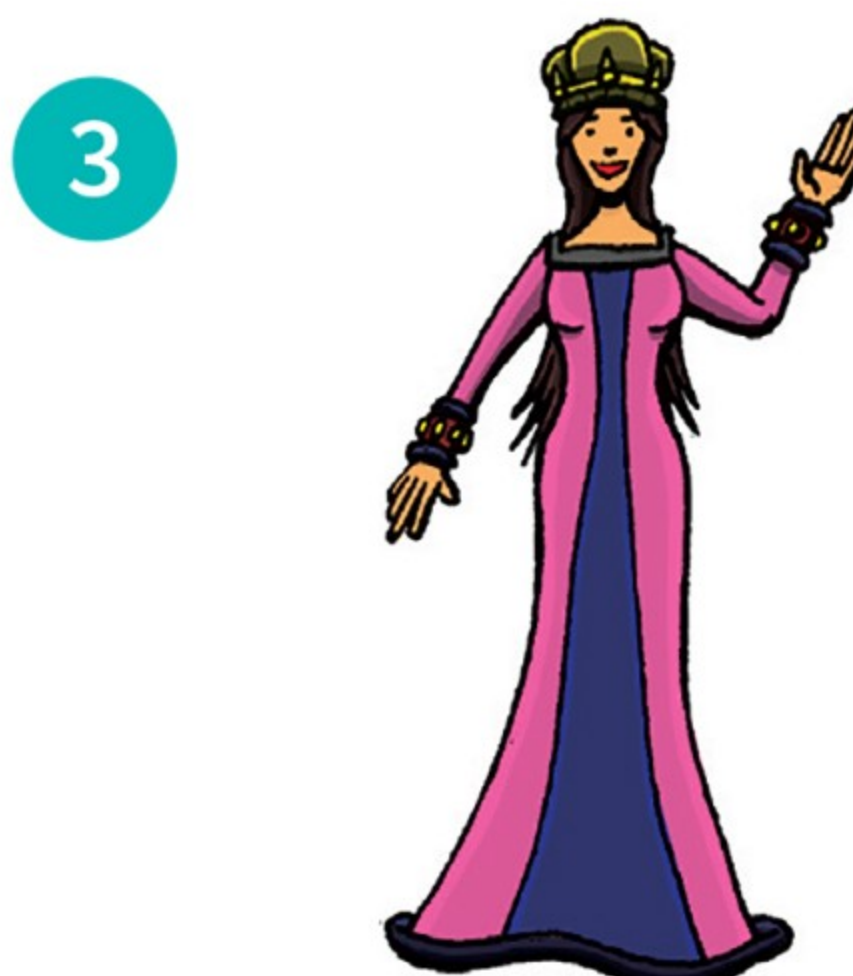
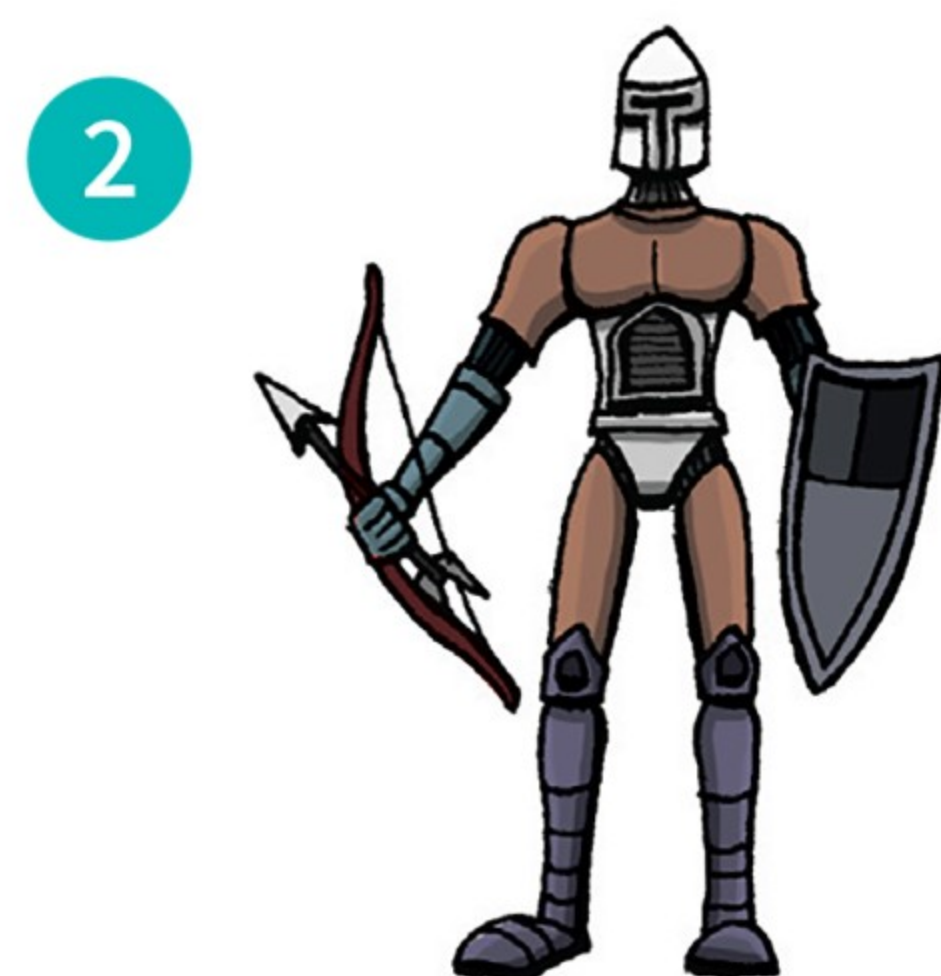


- 1 s w o r d
- 2 h l m t
- 3 s i e d
- 4 bo o and arr w
- 5 n i h t

- 6 n ck la e
- 7 cro n
- 8 be t
- 9 q ee
- 10 b a el e t



2 Look, read, and number the sentences.



- a ☒ 3 She's wearing a dress, a crown, and two bracelets.
- b ☐ He's wearing a helmet. He's carrying a shield and a bow and arrow.
- c ☐ She's wearing a dress with a belt, a crown, and a bracelet.
- d ☐ He's carrying his helmet. He's wearing his sword on his belt.

3 Imagine you are a queen or a knight. What are you wearing? Write sentences.

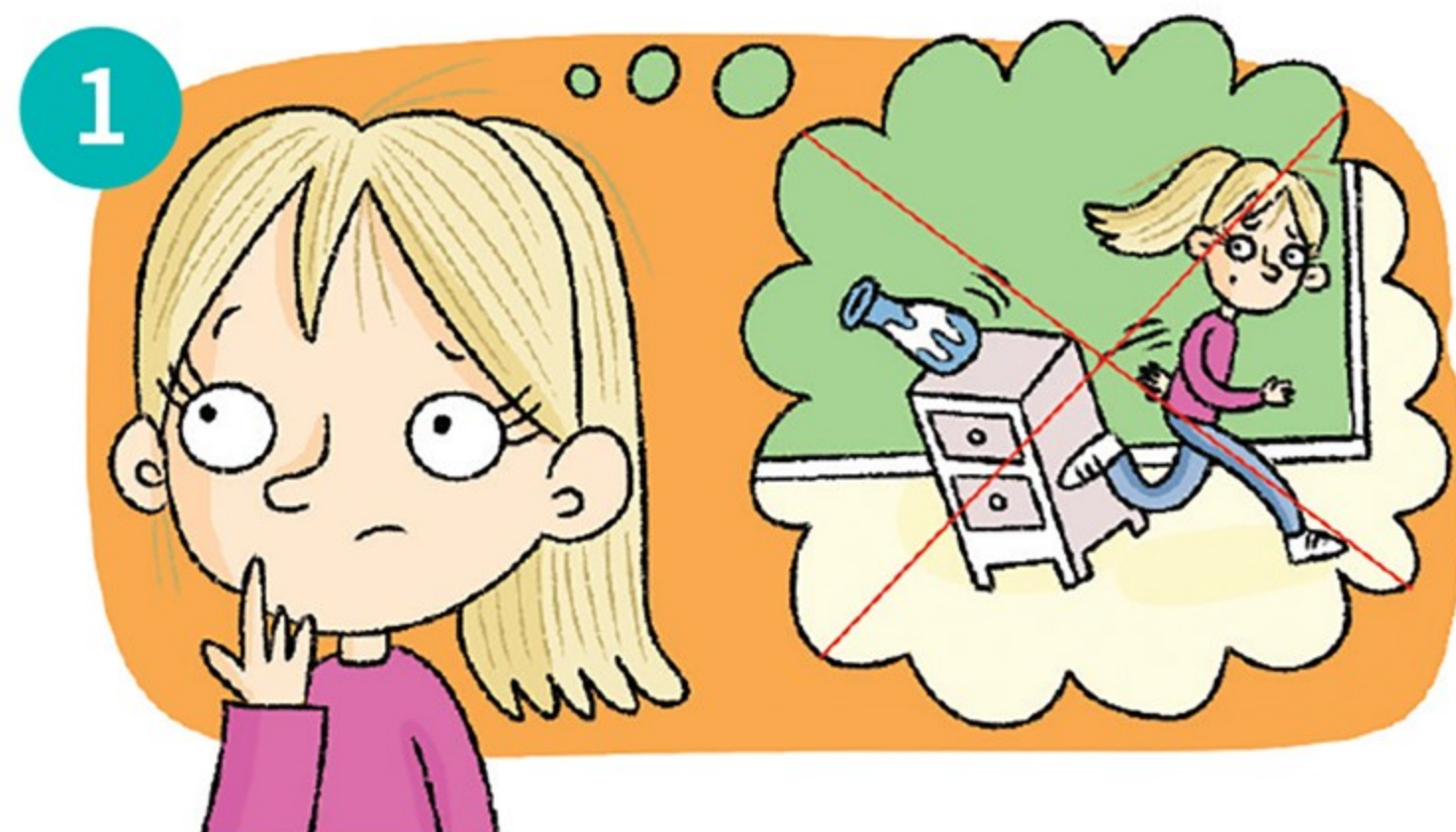
I'm a _____.

I'm wearing a _____.

1

Look and write the sentences under the pictures.

I have to drink more water. I'm not allowed to touch my sister's things.
 I have to spend time with my grandparents. I'm not allowed to eat too much ice cream.
 I have to do my homework. ~~I'm not allowed to run in the living room.~~



I'm not allowed to run in
the living room.



2

Complete with *have to* or *not allowed to* and a word from the box.

shout keep use ~~wear~~ drink buy

- 1 I have to wear a helmet when I ride my bike.
- 2 I _____ in the house when my baby brother is sleeping.
- 3 I _____ water from the lake. It isn't clean.
- 4 I _____ the dog on his leash. I don't want him to chase cats.
- 5 I _____ a new T-shirt. I have too many already!
- 6 I _____ my camera here. The sign says "No photos."

3

What do you have to do or are not allowed to do at home or at school? Write four sentences: two with *have to* and two with *now allowed to*.

I'm not allowed to be late for school.

1 Remember the song. Match.

- 1 use my cell phone

2 shout

3 fight
- I'm not allowed to
- 4 dance

5 take photos

6 run

2 Complete the poem about you. Then draw a picture.

There's a museum trip tomorrow
To learn our history,
But now I'm thinking about the things
My teacher said to me.
I have to _____.
I'm not allowed to _____.
I have to _____.
I'm not allowed to _____.

3 Write the phrases from the box in the correct column.
Then add one more to each column.

~~be polite~~

make noise

help my classmates

eat candy

listen to music on my phone

be on time

make a mess

help my teacher

In class, I have to	In class, I'm not allowed to
be polite	