

IELTS BOOSTER

GENERAL TRAINING



Deborah Hobbs and Susan Hutchison

Self-Study
edition



CAMBRIDGE
UNIVERSITY PRESS & ASSESSMENT

Official Cambridge IELTS Preparation

We provide you with the tools and resources you need to learn and show your skills to the world. Whether you're studying in a classroom, or at home, you can rely on us to help you get ready for test day.

© Cambridge University Press & Assessment 2025

CONTENTS

Map of the book 4

How to use the IELTS Booster 6

The IELTS test 7

Test overview 8

How is IELTS scored? 11

Worksheets

Listening

Worksheet 1 12

Worksheet 2 16

Worksheet 3 20

Worksheet 4 24

Worksheet 5 29

Worksheet 6 32

Reading

Worksheet 1 35

Worksheet 2 39

Worksheet 3 42

Worksheet 4 46

Writing

Worksheet 1 50

Worksheet 2 55

Worksheet 3 60

Worksheet 4 64

Worksheet 5 70

Speaking

Worksheet 1 77

Worksheet 2 81

Worksheet 3 85

Listening extended answer keys and transcripts 89

Reading extended answer keys 105

Sample Writing answers 110

Speaking extended answer keys and transcripts 116

Acknowledgements 122

MAP OF THE BOOK

Listening

Topic and question type

Worksheet 1
Pages 12–15

Dolphins

Avoiding word matching
Paraphrasing
Multiple-choice questions

Worksheet 2
Pages 16–19

Studying and work

Paraphrasing
Signposting
Contradiction
Matching questions

Worksheet 3
Pages 20–23

Films and filmmaking

Signposting language
Process
Sentence completion

Worksheet 4
Pages 24–28

Maps

Map labelling
Understand and follow directions
Sentence completion
Compass icon

Worksheet 5
Pages 29–31

Animals in the wild

Similarities
Using singular or plural nouns
Noticing errors
Table completion

Worksheet 6
Pages 32–34

Design competition

Note completion
Synonyms and paraphrases
Predicting word types
Sentence completion

Reading

Topic and question type

Worksheet 1
Pages 35–38

Juicers

Paraphrasing
Matching statements

Worksheet 2
Pages 39–41

Tiritiri Matangi Island Day Trip – New Zealand

Key words
True/False/Not given statements

Worksheet 3
Pages 42–45

Working as a greenkeeper – Western Australia

Sentence completion
Paraphrasing

Worksheet 4
Pages 46–49

The mystery of the incredible human brain

Answering questions
Question words and key words

Writing

Topic and task type

Worksheet 1
Pages 50–54

Letter of complaint

Style and tone
Formal letter
Identifying the task

Worksheet 2
Pages 55–59

Job application

Answering all points in the task
Suitable phrases
Proofreading

Worksheet 3
Pages 60–63

A personal letter

Functional language
Writing an informal letter
Identifying the task

Worksheet 4
Pages 64–69

Discussion essay

Presenting an argument
Supporting a point
Following a plan
Writing an introduction and a conclusion

Worksheet 5
Pages 70–76

Double question essay

Agreeing or disagreeing
Linking words

Speaking

Topic and task type

Worksheet 1
Pages 77–80

Friends and family

Speaking Part 1
Words and phrases to give examples
Words and phrases to give reasons
Appropriate answers

Worksheet 2
Pages 81–84

Descriptions

Speaking Part 2
Linking language
Making notes
Coherence and fluency

Worksheet 3
Pages 85–88

Discussion topics

Developing ideas
Phrases to agree and disagree
Developing your ideas

Extended answer key p89

For useful information about preparing for the IELTS test, go to: ielts.org

HOW TO USE THE IELTS BOOSTER

Welcome to the IELTS Booster General Training

What is the IELTS Booster?

The IELTS Booster provides focused test practice on all parts of the IELTS test. It will help you to prepare for the test and gain the confidence, skills and knowledge you need for test day.

How can I use it?

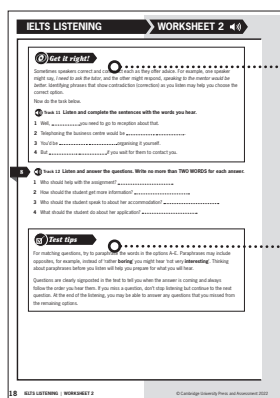
Pick and choose the areas you want to practise at any time.

Use the IELTS Booster alongside a coursebook or on its own as a self-study tool.

Download or print worksheets to use when you like.

How is it structured?

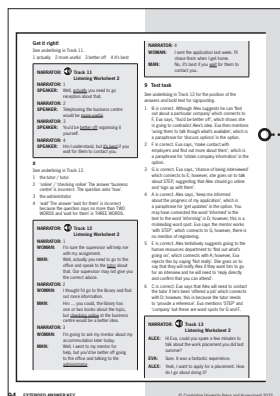
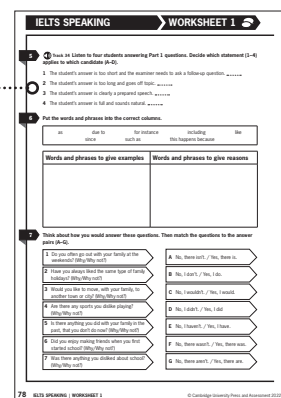
There are four sections which follow the order of the exam: Listening, Reading, Writing and Speaking.



Avoid the most typical mistakes that real IELTS candidates make with *Get it right!* Identify and correct common errors.

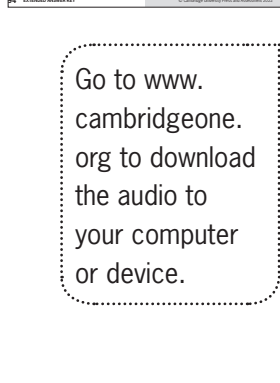
Test tips provide practical strategies and advice.

Practise vocabulary, grammar or functional language.

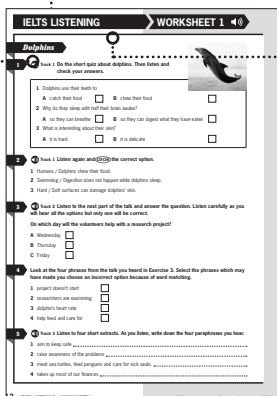


Access a complete answer key with sample answers for the Writing tasks and audioscript.

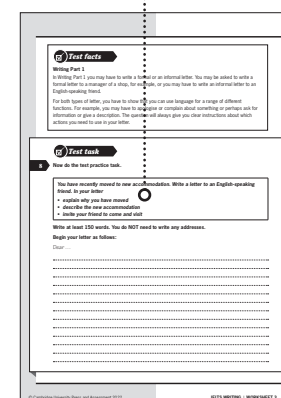
Test facts offer clear, concise information about the exercise type and best ways to approach it.



Go to www.cambridgeone.org to download the audio to your computer or device.



Find parts and exercises easily. There are several worksheets for each test part.



THE IELTS TEST

What are the two types of IELTS test?

The two types of tests are IELTS Academic and IELTS General Training. Both test English language abilities in Listening, Reading, Writing and Speaking. The Listening and Speaking parts are the same for both tests, but the Reading and Writing parts are different.

IELTS Academic is suitable:

- for studying at an English-speaking university, or other higher educational institution, at under- or postgraduate level.
- for professional registration, e.g., to register as an engineer, nurse or accountant in an English-speaking country.

IELTS General Training is suitable:

- for migration to certain English-speaking countries, like Canada or New Zealand.
- for studying below degree level in an English-speaking country.
- for a work placement in an English-speaking country or your own country.

How can I take the IELTS test?

You can take the IELTS test on paper or on a computer.

For IELTS on Paper, the Listening, Reading and Writing are completed on the same day and there are no breaks between them. The Speaking test can be completed up to seven days before or after. The total test time is 2 hours and 45 minutes.

For IELTS on Computer, the content and structure is the same as the paper test. You take the Listening, Reading and Writing test on the computer and the Speaking test is with an examiner face-to-face. The timings are a little different from the paper test as you do not have to transfer your answers to an answer sheet.

For more information about which test is suitable for you, and to check which organisations accept IELTS, go to ielts.org.

Book your IELTS test at ielts.org/book-a-test

TEST OVERVIEW

Listening

approximately 30 minutes

Speakers will have a range of native English accents, including British, North American and Australian. You'll hear the listening **once only**.

The Listening has a total of 40 questions and is in four parts. Each part has 10 questions.

Part 1 – a conversation between two people about an everyday topic (e.g., finding out information about a job)

Part 2 – a monologue about an everyday topic (e.g., giving information about changes in a community)

Part 3 – a conversation, usually between two people, in a training or educational context (e.g., students discussing an assignment)

Part 4 – a monologue in an academic context (e.g., a lecture)

Below are the question types you might find in the Listening:

Question type	Task format	Task focus
1 Multiple choice	Choose one answer from three alternatives, A–C. Choose two answers from five alternatives, A–E.	Tests detailed understanding of specific points or the overall understanding of the main points.
2 Matching	Match a list of statements with a set of options in a box.	Tests the ability to listen for detail and information provided.
3 Plan, map, diagram labelling	Label a plan, map or diagram, with a list provided in the question paper.	Tests the ability to understand a description of a place which is represented visually, e.g., the ability to understand and follow directions.
4 Form, note, table, flowchart, summary completion	Complete a form, notes, a table, a flowchart or a summary with a word or words from the Listening text.*	Tests the ability to understand and record the main points of the text in different formats.
5 Sentence completion	Complete a set of sentences using a word or words from the Listening text.*	Tests the ability to understand the main points in a text, e.g., cause and effect.
6 Short-answer questions	Read a question and then answer it with a short answer from the Listening text.*	Tests the ability to understand facts, e.g., places, dates and times.

*Candidates will hear the word they need in the text, and do not need to change it. They will be penalised if they go over the word limit given in the question, e.g., 'Write ONE WORD ONLY for each answer.'

IELTS General Training reading has a total of 40 questions. There are three sections. Section 1 may contain two or three short texts or several shorter texts. Section 2 comprises two texts. In Section 3, there is one long text. Below are the question types you might find:

Question type	Task format	Task focus
1 Multiple choice	Choose one answer from four alternatives, A–D. Choose two answers from five alternatives, A–E. Choose three answers from seven alternatives, A–G.	Tests detailed understanding of specific points or the overall understanding of the main points.
2 Identifying information	Write whether a statement is confirmed (True), states the opposite (False) or is neither confirmed nor contradicted (Not Given).	Tests the ability to identify specific information in a text.
3 Identifying writers' views/claims	Write whether a statement agrees with the claim or view (Yes), disagrees with the claim or view (No), or the claim or view is neither confirmed nor contradicted (Not Given).	Tests the ability to identify ideas and opinions.
4 Matching information	Match information to a paragraph or section of the text.	Tests the ability to scan for specific information in a text.
5 Matching headings	Match headings to the correct paragraph or section. There are always more headings than you need.	Tests the ability to recognise the main topic or idea of a paragraph or section.
6 Matching features	Match pieces of information to a list of options (e.g., match events to historical periods). Some options might not be used.	Tests the ability to scan and to understand facts and opinions in a text.
7 Matching sentence endings	Choose the best way to complete a sentence from a list of options. There are more options than questions.	Tests the ability to understand the main ideas in a text.
8 Sentence completion	Complete a sentence with a word or words from the text.	Tests the ability to find specific information.
9 Summary, note, table, flowchart completion	Complete a summary, note, a table or a flowchart with a word or words from the text.	Tests the ability to understand details and main ideas of a text.
10 Diagram label completion	Label a diagram with the correct word from the text or list of options.	Tests the ability to understand a description and to transfer information to a diagram.
11 Short answer questions	Read a question and then answer with a short answer from the text.	Tests the ability to understand facts, e.g., places, dates and times.

Correct answers are worth one mark each.

TEST OVERVIEW

General Training Writing

60 minutes

There are two writing tasks, and you must answer both. Aim to take about 20 minutes to answer Task 1 and 40 minutes to answer Task 2.

Task	Number of words	Task format
Writing Task 1	at least 150	You will be presented with a situation and asked to write a letter requesting information or explaining the situation. The letter may be personal, semi-formal or formal in style.
Writing Task 2	at least 250	You will be asked to write an essay in response to a point of view, argument or problem. The essay can be fairly personal in style.

You will be assessed on the following criteria:

Writing Task 1	Task achievement	Coherence and cohesion	Lexical resource	Grammatical range and accuracy
Writing Task 2	Task response	Coherence and cohesion	Lexical resource	Grammatical range and accuracy

Each task is assessed independently. The assessment of Task 2 carries more weight in marking than Task 1.

Speaking

11–14 minutes

The test consists of a face-to-face interview with an examiner. Tests are in three parts and are recorded.

Task	Timing	Task format
Speaking Part 1 – Interview	4–5 minutes	You answer questions on familiar topics, e.g., family, hobbies, likes and dislikes.
Speaking Part 2 – Long turn	3–4 minutes (including 1 minute preparation time)	You are given a task card, e.g., 'Describe something you want to own'. You have one minute to make notes before talking for up to two minutes.
Speaking Part 3 – Discussion	4–5 minutes	The examiner will ask you more abstract questions about the topic in Task 2, e.g., 'Does owning lots of possessions make people happy?'

You will be assessed on the following criteria:

Fluency and coherence	Lexical resource	Grammatical range and accuracy	Pronunciation
How well you maintain your flow of speech; how logical your answer is; how well you connect your ideas	The accuracy and variety of the vocabulary you use	The range, accuracy and complexity of the grammar you use	How intelligible you are


HOW IS IELTS SCORED?

You'll be awarded a band score of between 0 and 9 for your overall language ability. In addition, you'll be awarded an individual band score of between 0 and 9 for each of the four skills: Listening, Reading, Writing and Speaking. All scores are recorded on the Test Report Form along with details of your nationality, first language and date of birth. Each of the nine bands corresponds to a descriptive summary of your English language ability:

- 9 Expert User** – has fully operational command of the language. Their use of English is appropriate, accurate and fluent, and shows complete understanding.
- 8 Very Good User** – has fully operational command of the language with only occasional unsystematic inaccuracies and inappropriate usage. They may misunderstand some things in unfamiliar situations. They handle complex and detailed argumentation well.
- 7 Good User** – has operational command of the language, though with occasional inaccuracies, inappropriate usage and misunderstandings in some situations. They generally handle complex language well and understand detailed reasoning.
- 6 Competent User** – has an effective command of the language despite some inaccuracies, inappropriate usage and misunderstandings. They can use and understand fairly complex language, particularly in familiar situations.
- 5 Modest User** – has a partial command of the language and copes with overall meaning in most situations, although they are likely to make many mistakes. They should be able to handle basic communication in their own field.
- 4 Limited User** – basic competence is limited to familiar situations. They have frequent problems in understanding and expression.
- 3 Extremely Limited User** – conveys and understands only general meaning in very familiar situations. Frequent breakdowns in communication occur.
- 2 Intermittent User** – has great difficulty understanding spoken and written English.
- 1 Non User** – essentially has no ability to use the language beyond possibly a few isolated words.
- 0 Did not attempt the test** – did not answer the questions.

Dolphins




1  **Track 1** Do the short quiz about dolphins. Then listen and check your answers.

- 1 Dolphins use their teeth to
A catch their food ☐ **B** chew their food ☐
- 2 Why do they sleep with half their brain awake?
A so they can breathe ☐ **B** so they can digest what they have eaten ☐
- 3 What is interesting about their skin?
A it is hard ☐ **B** it is delicate ☐

2  **Track 1** Listen again and circle the correct option.

- 1 Humans / Dolphins chew their food.
- 2 Swimming / Digestion does not happen while dolphins sleep.
- 3 Hard / Soft surfaces can damage dolphins' skin.

3  **Track 2** Listen to the next part of the talk and answer the question. Listen carefully as you will hear all the options but only one will be correct.

On which day will the volunteers help with a research project?

- A** Wednesday ☐
B Thursday ☐
C Friday ☐

4 Look at the four phrases from the talk you heard in Exercise 3. Select the phrases which may have made you choose an incorrect option because of word matching.

- 1 project doesn't start ☐
- 2 researchers are examining ☐
- 3 dolphin's heart rate ☐
- 4 help feed and care for ☐

5  **Track 3** Listen to four short extracts. As you listen, write down the four paraphrases you hear.

- 1 aim to keep safe
- 2 raise awareness of the problems
- 3 meet sea turtles, feed penguins and care for sick seals.
- 4 takes up most of our finances