

Social
Science



Cambridge
Social
Science
3

**Second
Edition**

Pupil's Book
with eBook



CAMBRIDGE

SOCIAL SCIENCE 3



Contents

Welcome

Page 4

1 How do maps help us to find places?

Page 6

- Types of maps: political, physical, street map
- Elements of a map
- Scale of a map

2 Why do we study geography?

Page 20

- Globes and maps
- Continents, countries and cities
- Oceans, seas and rivers

3 How is land organised into regions?

Page 32

- European countries
- Regions in Spain
- Autonomous communities, autonomous cities and provinces of Spain

4 How do people in Spain live?

Page 44

- Spanish traditions
- Spanish landmarks
- Protected cultural spaces in Spain
- Living together in society

5 How can we learn about history?

Page 58

- Archaeology
- Historical sources
- Measurements of time
- Roman numerals

6 How did people live in the ancient past?

Page 70

- Prehistory
- Ancient History
- Middle Ages
- Early Modern Age
- Modern Age

Our Project 1:
Protecting Spain's natural treasures pp 30–31

Our Project 2:
Moving around the city pp 56–57

Our Project 3:
Differences bring us together pp 82–83



Hands on

Documentaries

<ul style="list-style-type: none">• Make a compass.	<ul style="list-style-type: none">• Different types of maps
<ul style="list-style-type: none">• Make a globe.	<ul style="list-style-type: none">• Geography of Spain and the Community of Madrid
<ul style="list-style-type: none">• Complete a puzzle of the autonomous communities of Spain.	<ul style="list-style-type: none">• Rules of the road
<ul style="list-style-type: none">• Design a poster about social norms for the classroom.	<ul style="list-style-type: none">• Places to visit in Spain
<ul style="list-style-type: none">• Make a fossil.	<ul style="list-style-type: none">• Historical findings
<ul style="list-style-type: none">• Create a prehistoric cave painting.	<ul style="list-style-type: none">• Let's go back in time!

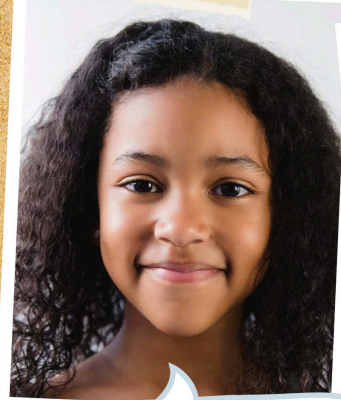
**Questions
and Study aids**



Page 84

WELCOME TO CAMBRIDGE SOCIAL SCIENCE

Welcome to the amazing world of social science.



I'm Laura and
I want to be a
travel writer!



Hi, I'm Miguel.
I want to be a
tour guide!

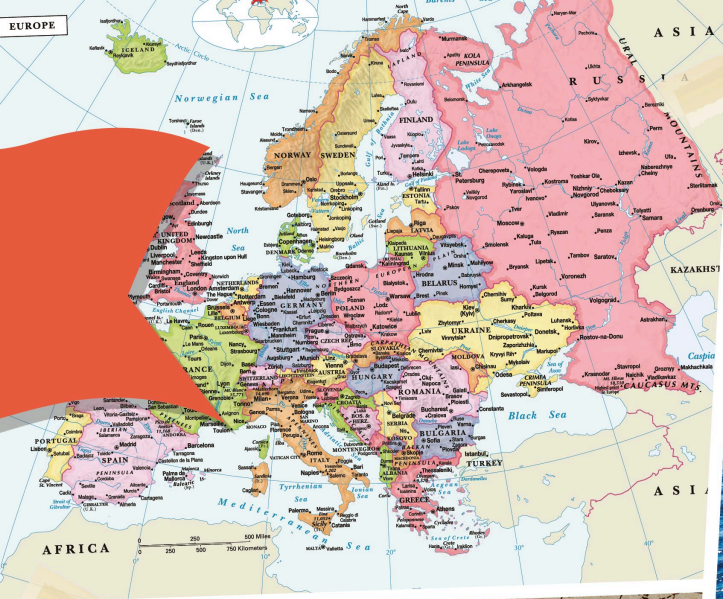


Hello! I'm Tanu
and I want to
be a historian.



Hey! I'm Armando
and I want to be
an archaeologist.

South Pole



I'm Ishir and I want to be a cartographer!



Hello! I'm Andrea and I want to be a geography teacher.



Can you match the professions to the children?

Come with us and find out:

- how to use maps.
- why we study geography.
- how regions are separated in Spain and other parts of Europe.
- about Spanish traditions and culture.
- how we can find information from the past.
- how life has changed throughout the ages.

1

HOW DO MAPS HELP US TO FIND PLACES?

What do the people in the photos have in common?

Look and see...



Which animals do you think live in these places?



What do you need to take on a trip?

Song

Don't panic, read a map!



DOCUMENTARY

Different types of maps



When I grow up, I want to study cartography so I can make maps! Come with me and learn about:

- different types of maps and what they're used for.
- things that all maps have in common.
- how to locate places using a globe.



WHY AREN'T ALL MAPS THE SAME?

A **map** is a representation of an area on a flat **surface**¹. Maps help us locate different places. Different types of maps show different information.

Did you know there are different types of maps for different purposes?



How are maps different from globes?



Political maps can show continents, countries, regions and cities. They also show the political **borders**² between areas.

What is a political border? Which countries share a political border with Spain?

Find the flag of one of these countries hidden in the unit!

Physical maps show natural features of the Earth, such as oceans, seas, rivers, lakes, mountains and mountain ranges.

Look at this physical map.
What do the different colours represent?



Street maps have **symbols** for places of interest, such as a city or town hall, museums, parks and train stations.

On which type of map would you find the longest river in the world?

What have I learnt?

Categorise the information.

natural features

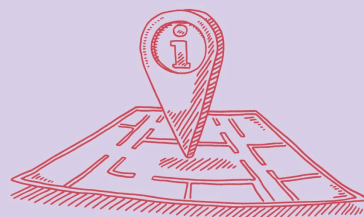
borders between areas

symbols

Political map

Street map

Physical map



¹**surface:** the top part of something
²**border (or boundary):** the line that separates one country (or one area) from another