

Bricks



E-BOOK



MP3

Reading

1



170

NONFICTION

Bricks

Bricks Reading 170 ¹



NONFICTION

Contents

Integrated Theme	Unit	Title (<i>Subject, Text Type</i>)	Page
Plant Life	1	Four Tasty Seasons (<i>Life Science, Informational Text</i>)	06
	2	120 Days of Pumpkins (<i>Life Science, Expository Text</i>)	12
Wild Animals and Pets	3	Animals Here, There, and Everywhere! (<i>Life Science, Informational Text</i>)	18
	4	A Pet Owner's Manual (<i>Social Studies, Expository Text</i>)	24
The Human Body	5	Look, Listen, Touch, Smell, and Taste! (<i>Human Biology, Expository Text</i>)	30
	6	Bend and Stretch! (<i>Human Biology, Expository Text</i>)	36
Communities	7	Cities and Farms (<i>Social Studies, Informational Text</i>)	42
	8	Milk for You! (<i>Social Studies, Expository Text</i>)	48

Integrated Theme	Unit	Title (Subject, Text Type)	Page
Matter	9	How Water Changes! (Physical Science, Explanatory Text)	54
	10	Fruit Ice Pops (Social Studies, Procedural Text)	60
Rhythm and Sound	11	Amazing Musical Instruments (Music, Informational Text)	66
	12	Truly Listening (Literature, Biographical Text)	72
Exploring the World	13	Hot Mexico (Social Studies, Expository Text)	78
	14	Is Iceland an Ice Land? (Social Studies, Informational Text)	84
Space	15	Eight Spinning Planets (Earth Science, Informational Text)	90
	16	What Is the International Space Station? (Earth Science, Expository Text)	96
Word Review		Word Quiz, Crossword Puzzle, Secret Word, Word Search	102
Word Dictionary		Parts of Speech & Definitions	112



OBJECTIVE:

Students will learn how an apple tree changes in each season.

Four Tasty Seasons

Let's Get Ready!

What do plants need to grow and live?
How do plants change in spring?



NEW WORDS

Listen and repeat the words. **Track 02**



bud



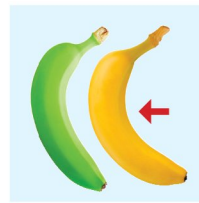
nectar



pollen



flesh



ripe



bare

WORD STUDY

Meanings of New Words
Uses of Words in Context
Word Expansion: bare

Look at the pictures and choose the correct words.

1



A bird drinks (water | nectar) from flowers.

2



The tomatoes are not (ripe | bare) yet.

3



The bee is all covered in (soil | pollen).

Read and write the correct words.

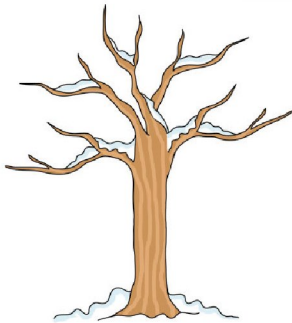
bare buds flesh

1 The _____ open into flowers.

2 A watermelon has green skin and red _____.

3 There are _____ trees on the snowy ground.

Word Expansion



Tree branches are **bare** in winter.

adj. bare



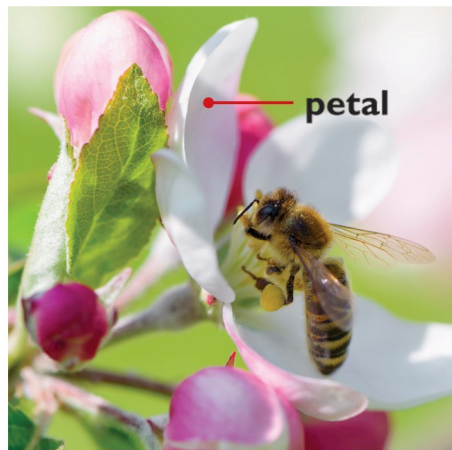
I'm standing in my **bare** feet.

Four Tasty Seasons Track 03

Apple trees grow and change in each season.

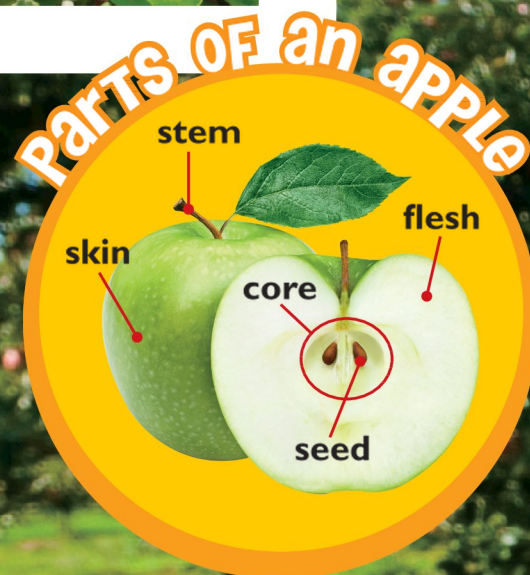
Spring

An apple tree grows new branches and leaves. Little **buds** open into bright pink flowers. Bees drink the sweet **nectar**. **Pollen** sticks to **them**. They carry the pollen to other flowers. Now the flowers can make seeds.



Summer

The flower petals fall off. The seeds grow into green apples. They grow hard parts first. These are the apple cores. The apple **flesh** grows around the cores.



READ & SAY!

- What do bees carry to other flowers?
- What happens to the apples in the fall?

Fall

The apples become **ripe** and turn red. Farmers pick them, and people eat them. Unpicked apples fall to the ground. They help make the soil healthy for the next year.



Winter

The apple tree rests in the winter. All the leaves fall off, and the branches are **bare**. The tree hardly grows. It waits for the spring to come again!



You Know What?

Apple Facts

- One apple tree can grow more than 1,000 apples in a year.
- Throughout the world, there are 7,500 kinds of apples. They vary in color, size, taste, and texture.

COMPREHENSION

Read and choose the correct answers.

- 1 What is the passage mainly about?
 - a. why we have four different seasons
 - b. what causes the four seasons
 - c. how an apple tree changes in each season

- 2 What opens into bright pink flowers?
 - a. pollen
 - b. buds
 - c. branches

- 3 When do the seeds grow into green apples?
 - a. in the spring
 - b. in the summer
 - c. in the winter

- 4 How do the apples grow?
 - a. The apple seeds grow outside the flesh.
 - b. The apple flesh grows inside the cores.
 - c. The apple cores grow first.

- 5 Which is **not** true about the apple tree?
 - a. The flowers can make seeds in spring.
 - b. Farmers pick ripe apples in fall.
 - c. The flower petals fall off in winter.

- 6 What does the word “**them**” refer to?
 - a. the bees
 - b. the nectar
 - c. the flowers



WRITE IT!

grow into

Read the sentence with the phrase “grow into.” Make your own sentence using it.

The seeds **grow into** green apples.

Sample answer: A caterpillar grows into a butterfly.

PARAGRAPH SKILL

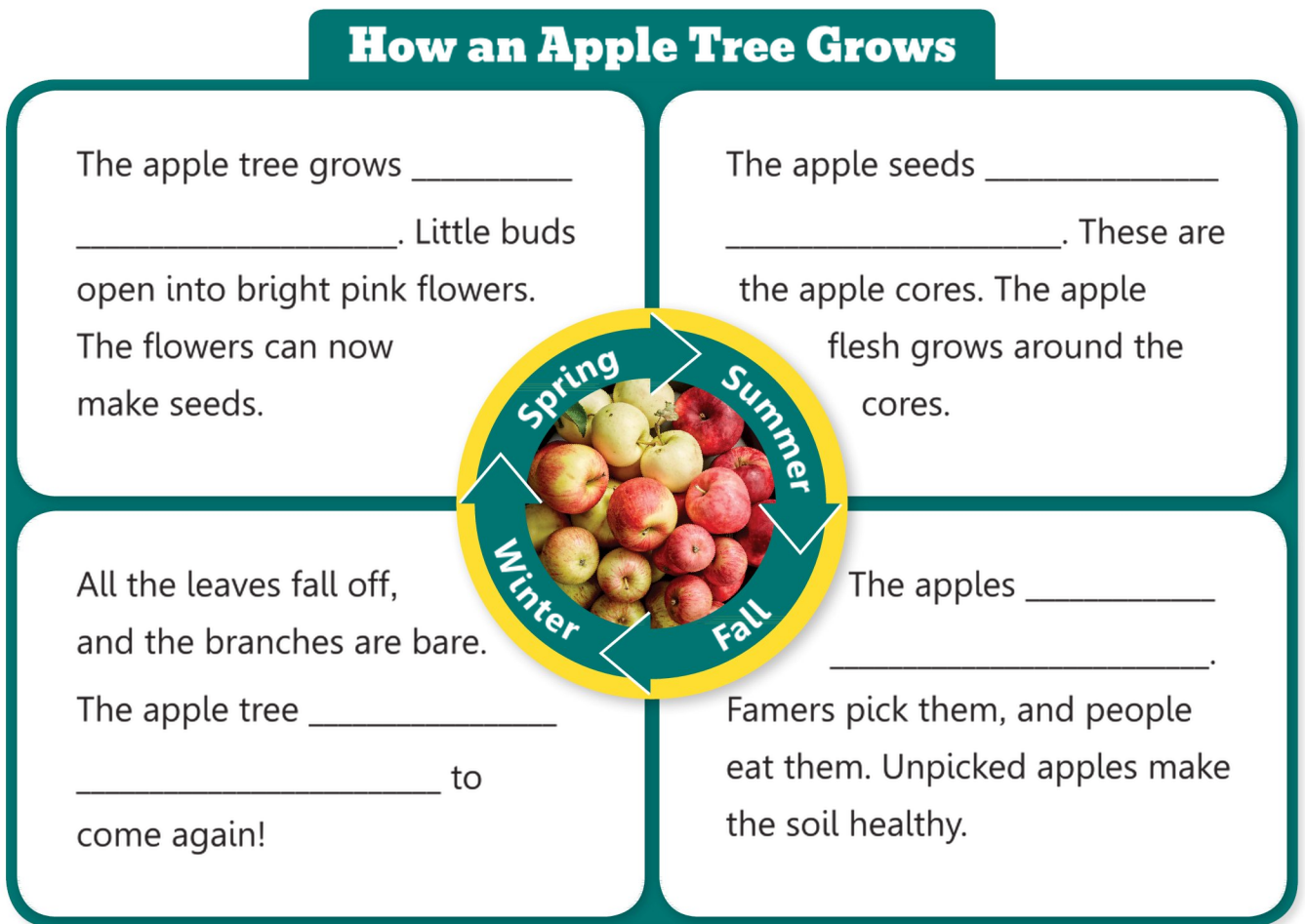
Choose the best place for the sentence.

The apple flesh grows around the cores.

The flower petals fall off. The seeds grow into green apples. **a** They grow hard parts first. **b** These are the apple cores. **c**

ORGANIZE IT! Finding Details

How does an apple tree change in each season? Complete the chart.



become ripe and turn red
new branches and leaves

waits for the spring
grow hard parts first