

Bricks

3

ELT Grammar



Emma jumps the highest.

YES!

It is walking slowly.



STARTER



This is Leo's ice cream.

The toy robot is noisy.



ADVERBS SUPERLATIVES PREPOSITIONS OF TIME



School starts at 9. I'm late!



Bricks

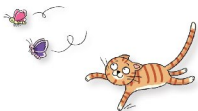
Workbook

CONTENTS



UNIT 01	Present Simple	<i>The Verb Be</i>	4
UNIT 02	Present Simple	<i>Affirmatives and Negatives</i>	7
UNIT 03	Present Simple	<i>Yes / No Questions</i>	10
UNIT 04	Present Continuous		13
UNIT 05	Nouns		16
UNIT 06	Pronouns		19
UNIT 07	Possessives		22
UNIT 08	Future	<i>Affirmatives and Negatives</i>	25
UNIT 09	Future	<i>Yes / No Questions</i>	28





UNIT 10	Past Simple	<i>The Verb Be</i>	31
UNIT 11	Past Simple	<i>Regular Verbs</i>	34
UNIT 12	Past Simple	<i>Irregular Verbs</i>	37
UNIT 13	Past Simple	<i>Yes / No Questions</i>	40
UNIT 14	Comparative Adjectives		43
UNIT 15	Superlative Adjectives		46
UNIT 16	Adverbs		49
UNIT 17	Prepositions of Time		52
UNIT 18	Question Words		55



Complete the Charts

58

Let's Learn Be동사의 현재시제

- 1 Be동사의 현재시제(present simple)는 '~이다'라는 뜻을 가지며 주어에 따라 **am, are, is**의 다른 형태로 쓰인다.
- 2 부정문: <am/are/is + not>의 형태로 '~이 아니다'라는 뜻의 부정문을 만들 수 있다.
- 3 의문문: <Am/Are/Is + 주어 ~?>의 형태로 '~이니?'라는 뜻의 의문문을 만들 수 있다.
긍정의 대답은 <Yes, 주어 + be동사.>, 부정의 대답은 <No, 주어 + be동사 + not.>으로 한다.

긍정문 (부정문) Affirmatives (Negatives)	질문과 대답 Questions & Answers	
I am (not) happy.	Am I sad?	Yes, you are . No, you aren't .
We/You/They are (not) nurses.	Are we/you/they doctors?	Yes, you/we/they are . No, you/we/they aren't .
She/He/It is (not) tall.	Is she/he/it short?	Yes, she/he/it is . No, she/he/it isn't .

I'm not = I am not / aren't = are not / isn't = is not

Let's Practice

A Look and write the verb **be** or **be + not**.

1 Robert _____ is _____ a farmer. He _____ isn't _____ a taxi driver.



2 We _____ sad. We _____ happy.



3 Andy and Lucy _____ students. They _____ teachers.



4 The hamster _____ small. It _____ big.



5 I _____ a baker. I _____ a vet.



B Look and complete the questions and answers.





- 1 Is she tall? No, she isn't.
- 2 _____ doctors? _____.
- 3 _____ a monkey? _____.
- 4 _____ a singer? _____.
- 5 _____ old? _____.


C Look, circle, and unscramble.

1  chameleons (are) aren't They .
 → They are chameleons.

2  not | am'n't I'm a runner .
 → _____

3  she Is | Am a nurse ?
 → _____

4  Are an astronaut you | he ?
 → _____

5  slow The cheetah is | isn't .
 → _____

A Circle and write the correct words.

 1 The tree is tall.

 is | are

2 _____ you a firefighter?

Are | Is

3 I _____ a dentist.

aren't | am not

4 The bikes _____ new.

am | are

5 _____ it an elephant?

Are | Is

6 He _____ an artist.

isn't | aren't

B Look and correct the underlined sentences.

7


 Are they florists? Yes, they aren't.

 → Yes, they are.

8


 She is a taxi driver? Yes, she is.

→ _____

9


 The apples isn't red. They are green.

→ _____

10


 Simon are a baker. He isn't a cook.

→ _____

11


 It is a fox. It aren't a rabbit.

→ _____

12


 Are you happy? No, I am.

→ _____

Let's Learn 현재시제의 긍정문과 부정문

- 1 현재시제(present simple)는 현재의 사실이나 반복되는 습관, 또는 동작을 나타낸다.
- 2 긍정문: 주어가 I, You, We, They, 복수명사(plural noun)이면 동사를 원래 형태 그대로 쓰고, 주어가 3인칭 단수인 She, He, It, 단수명사(singular noun)이면 동사 뒤에 **-s/es/ies**를 붙인다.
 I like carrots. 나는 당근을 좋아한다. She likes carrots. 그녀는 당근을 좋아한다.
- 3 부정문: <don't/doesn't + 동사원형>의 형태로 '~하지 않는다'라는 뜻의 부정문을 만든다.
 I don't like carrots. 나는 당근을 좋아하지 않는다. She doesn't like carrots. 그녀는 당근을 좋아하지 않는다.

동사 변화 규칙

대부분의 규칙 동사: +s	walk → walks	live → lives	play → plays
<-x, -o, -sh, -ch>로 끝나는 동사: +es	fix → fixes	brush → brushes	wash → washes
<자음 + y>로 끝나는 동사: y + -ies	do → does	watch → watches	catch → catches
불규칙 변화	cry → cries	fly → flies	study → studies
	have → has		

Let's Practice
A Look and write using the present simple.
Jane's Morning Routines


- 7:00 wake up
 7:20 feed the dog
 7:40 eat breakfast

- 1 Jane _____ wakes up _____ at 7:00.
 2 She _____ at 7:20.
 3 She _____ at 7:40.

Sue and Larry's Morning Routines


- 6:00 wake up
 6:30 exercise
 7:00 cook breakfast

- 4 Sue and Larry _____ at 6:00.
 5 They _____ at 6:30.
 6 They _____ at 7:00.

B Look, choose, and write.

study

brush

live

do

have

1



I brush my hair in the morning.

I don't brush my hair at night.

2



Kate _____ French after school.

She _____ English.

3



Dave _____ the dishes every day.

He _____ the laundry.

4



Dolphins _____ in water.

They _____ on land.

5



Sam _____ a sister.

He _____ a brother.

C Correct the underlined words and rewrite the sentences.



1 We play soccer.

→ We don't play soccer.



2 The mechanic doesn't fix cars.

→ _____



3 Lily doesn't have an iguana.

→ _____



4 A mole lives in water.

→ _____



5 Jenny doesn't study at night.

→ _____

A Check the correct sentences.

1

- He is a magician.
 He are a magician.



2

- Katie don't eat breakfast.
 Katie doesn't eat breakfast.

3

- The snake is long.
 The snake are long.

4

- Brian watch TV on Sundays.
 Brian watches TV on Sundays.

5

- Are they kangaroos?
 They are kangaroos?



6

- She doesn't have a dog.
 She doesn't has a dog.



B Look and write using the words.



7 be Is the car old? No, it isn't.

8 play Mary plays tennis. She doesn't play basketball.

9 have A rabbit has short ears. It has long ears.

10 be They are scientists. They are doctors.

11 be The banana is yellow. It isn't green.

12 go Beth and I go to yoga class. We go to art class.

Let's Learn 현재시제의 의문문

- 현재시제의 의문문: 주어 앞에 **Do**나 **Does**를 써서 '~하니?'라는 뜻의 의문문(question)을 만들 수 있다.
- Do/Does + 주어 + 동사원형 ~?**: 주어가 I, you, we, they, 복수명사(plural noun)일 때는 **Do**를 쓰고, she, he, it, 단수명사(singular noun)일 때는 **Does**를 쓴다.
- 긍정의 대답은 <Yes, 주어 + do/does.>, 부정의 대답은 <No, 주어 + don't/doesn't.>로 한다.

질문 Questions	대답 Answers	
Do I ride a bike?	Yes, you do .	No, you don't .
Do you ride a bike?	Yes, I do .	No, I don't .
Do we/you/they ride bikes?	Yes, you/we/they do .	No, you/we/they don't .
Does she/he/it ride a bike?	Yes, she/he/it does .	No, she/he/it doesn't .

don't = do not / doesn't = does not

Let's Practice
A Write and match.

- | | | | | | | |
|---|-------|----|------|-------|----------------|--------------------|
| 1 | drink | Do | you | drink | coffee? | • Yes, he does. |
| 2 | live | | they | | in Canada? | • No, they don't. |
| 3 | like | | she | | pancakes? | • Yes, I do. |
| 4 | rain | | it | | in the spring? | • No, she doesn't. |
| 5 | walk | | he | | his dog? | • No, we don't. |
| 6 | do | | you | | yoga? | • Yes, it does. |